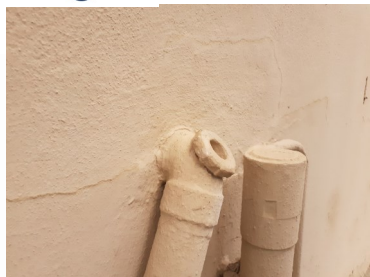




WUNNEL installation instructions



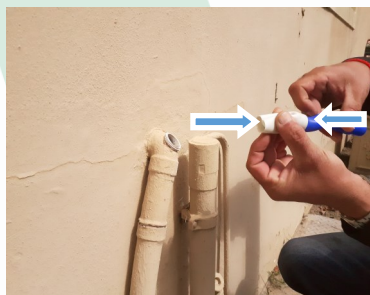
Step 1– Locate your waste water inspection eye cover



Step 2– Remove cover by turning it anti-clockwise
(Store in a safe place for future re-attachment)



Step 3– Compress your WUNNEL to reduce size and create a foldable area.



Step 4– Squeeze the sides together to create a compressed fold.



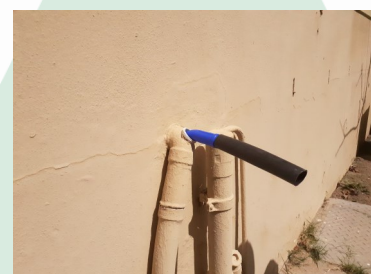
Step 5– While holding the fold in place, insert the WUNNEL into the inspection eye. It should expand to its shape at rest.



Step 6– Give the WUNNEL a wiggle to ensure that it has properly seated and sealed.



Step 7– Should you wish to divert your water to a part of your garden using your hose pipe, locate the sample irrigation pipe that you received with your purchase



Step 8– Slide the pipe section over the exposed part of your WUNNEL.



Step 9– You can now slide your 22mm hosepipe into the sample pipe.

Additional considerations for use:

- The device is intended to use gravity to feed the flow of water, therefore it will be a trickle and not pressurized flow.
- For best results for garden redirection, have the flow move from your outlet to the lowest part of your garden
- Should your water outlet point on your home plumbing be too low for a bucket to be placed beneath the flow, you could use a portion of the irrigation pipe to flow the water to a low enough point, or dig a pit to accommodate your bucket.
- Ensure that whatever pipe you use is not pinched or curled up as this will impede the water flow.
- Depending on the amount of soap you use, the pipe can become clogged after extended use, so ensure that you “flush” the pipe from time to time to ensure optimal flow.
- Should you wish to purchase irrigation pipe to extend the flow end-point of your captured water, then use the provided sample pipe or ask for “**Polypipe LDPE 20mm CL3**”.
- Your purchase includes, a WUNNEL device, Installation instructions and a sample of the applicable irrigation pipe size.